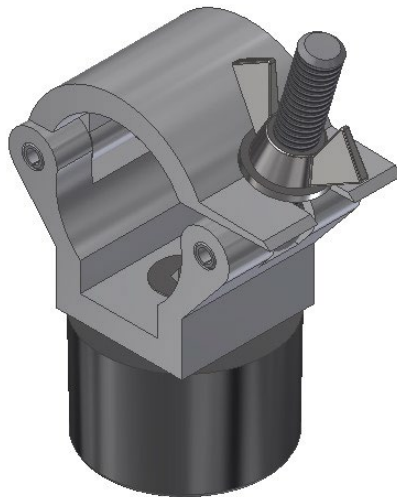


FRAME-PF-UNI-CLP PT Series

Clamp adapter for 30 or 40mm pipes on EVO-FRAMEs for portrait table installation, 4 piece set

Manual Version 1.0



Date	Revision No.	Author	Checked	Approved	Description
04.04.2020	1.0	TSN	GJN	RBR	Initial release

Contact

Tel.: +49 2204 9485 30

E-Mail: info@exactsolutions.de

Web: www.exactsolutions.de

Table of content

1. Preamble.....	2
2. Safety instructions.....	2
2.1 Warnings.....	2
2.2 Caution.....	3
3. Scope of delivery	4
4. Overview of model numbers and compatibility	5
6. Description of the product.....	6
6.1 Intended use	6
6.2 Specifications	7
7. Installing the clamps to the frame	7
14. System maintenance and inspection (Re-examination)	10
15. Disposal of components	11
15.1 Metal parts and packaging.....	11
15.2 Disposal of entire devices	11
Imprint.....	11

1. Preamble

The products of FRAME-PF-UNI-CLP PT Series had been developed and manufactured with the highest care and attention. However, improper handling can cause a risk for safety and / or damage. Read these instructions carefully before handling and installing the product so that you can safely enjoy your device. In the following pages, you will find all the needed information for a safe and fast installation. After the installation is done properly, you can enjoy all the features of your new product. Please consider keeping the original box and packaging materials, in case you ever need to ship the product.

Model number: **FRAME-PF-UNI-CLP30PT**
 FRAME-PF-UNI-CLP40PT

Copyright © 2024 EXACT solutions GmbH. All rights reserved.

2. Safety instructions



These installation instructions must always be handed over to the person who is carrying out the installation.

Read these instructions carefully before installing the system.

2.1 Warnings



The FRAME-PF-UNI-CLP PT Series is intended for use by fully qualified, trained and competent persons to provide safe and secure transportation, installation and adjustment of projectors.



Warning: Handling only by instructed, qualified and authorised person with a minimum age 18 years and of sound mind.



For indoor usage only

Only use the FRAME-PF-UNI-CLP PT Series in a closed environment (conference rooms, theatres, convention halls, etc.) where there is no wind, moisture, excessive heat etc.



Make sure that only the designated EVO-Frames are installed with the products of FRAME-PF-UNI-CLP PT Series! Do not try to use it with other products because serious accidents can occur!



Do not remove or replace any parts of the FRAME-PF-UNI-CLP PT Series on your own. Contact the manufacturer or service partner in case of damage or loss. Removing or replacing parts by non-certified companies or people might result in serious accidents and death.

Definition of qualified persons:

Trained/Qualified person

A person can be considered as trained/qualified when it has been thoroughly informed and/or trained about the assigned task and the possible dangers that can occur in case of improper behaviour and / or not observing precisely the installation instructions.

Qualified/Specialised person

A person can be considered qualified or specialised when, based on specialised training, knowledge and experience, it can assess the work assigned and recognise possible dangers.

Only use the FRAME-PF-UNI-CLP PT series for its intended use.

- If this product is used for something else than its intended use, serious accidents and death may result. See chapter 6.1 Intended use

Installation work should only be carried out by a qualified technician.

- If this product is not installed correctly, serious accidents may result.

Do not use the product outdoors.

- This product is made only for indoor usage. If the FRAME-PF-UNI-CLP PT Series is mounted outdoor, there are many influences like wind or rain that can have an effect on the stability of the whole system.
- This can cause property damage, serious accidents and death.

Only use projector frames that are specified by the manufacturer to be used with the FRAME-PF-UNI-CLP PT Series.

- Use only EVO-Frames by EXACT solutions with the FRAME-PF-UNI-CLP PT Series.

2.2 Caution

Use only gentle cleaning agents to avoid damage

- Cleaning may be done with a soft cloth and a little bit of warm, slightly soapy water.
- Do not use any oil, acid etc. on the frame or its components. This may damage the system.

Incorrect disposal is a risk to humans and nature

- Disposal must be done in accordance with local laws and regulations. Contact the manufacturer in case of any questions.

3. Scope of delivery



Note: Please check the delivery for completeness and damage immediately after you receive the shipment. Please contact your vendor in case of missing or damaged parts.



FRAME-PF-UNI-CLP30PT

Or

FRAME-PF-UNI-CLP40PT

- Used for projector installation
- Number of units: 4 pcs set
- Weight: approx. **0,6 kg / 1,32 lbs**



User manual
for FRAME-PF-UNI Series

4. Overview of model numbers and compatibility

Product Number	Compatible EVO Frames
FRAME-PF-UNI-CLP30PT	FRAME-EVO-P10 FRAME-EVO-P11 FRAME-EVO-P14 FRAME-EVO-P17 FRAME-EVO-P20 FRAME-EVO-P30 FRAME-EVO-E10 FRAME-EVO-E20 FRAME-EVO-C20
FRAME-PF-UNI-CLP40PT	FRAME-EVO-P31H



The FRAME-PF-UNI-CLP PT Series are made for specific tube diameter. Make sure to use the clamps only on suitable tubes. Most EVO Frames have a 30 mm tube diameter. Currently only FRAME-EVO-P31H has a 40 mm tube diameter.



Note: The above table lists frame models that are compatible. Please contact us if you are missing a frame.



In this manual, when reference is made to “FRAME-PF-UNI CLP PT Series” it is automatically a reference to all products from this series.

6. Description of the product

6.1 Intended use

The products of FRAME-PF-UNI-CLP PT Series are clamps with rubber feet which are designed and intended to mount projector frames of the EVO-FRAME Series in Portrait mode on for example a table or floor.

The FRAME-PF-UNI-CLP PT Series is intended for use by fully qualified, trained and competent persons to provide save installation and adjustment of EVO-FRAMES and the mounted projectors. The FRAME-PF-UNI-CLP PT Series as well as the EVO-Frames are made only for indoor usage.

The different products of the FRAME-PF-UNI-CLP PT Series vary in the possible pipe diameter to where it can connect. The following section will provide an overview of the different types.

FRAME-PF-UNI-CLP30PT is made to mount EVO Frames with 30 mm pipe diameter.

FRAME-PF-UNI-CLP40PT is made to mount EVO Frames with 40 mm pipe diameter.

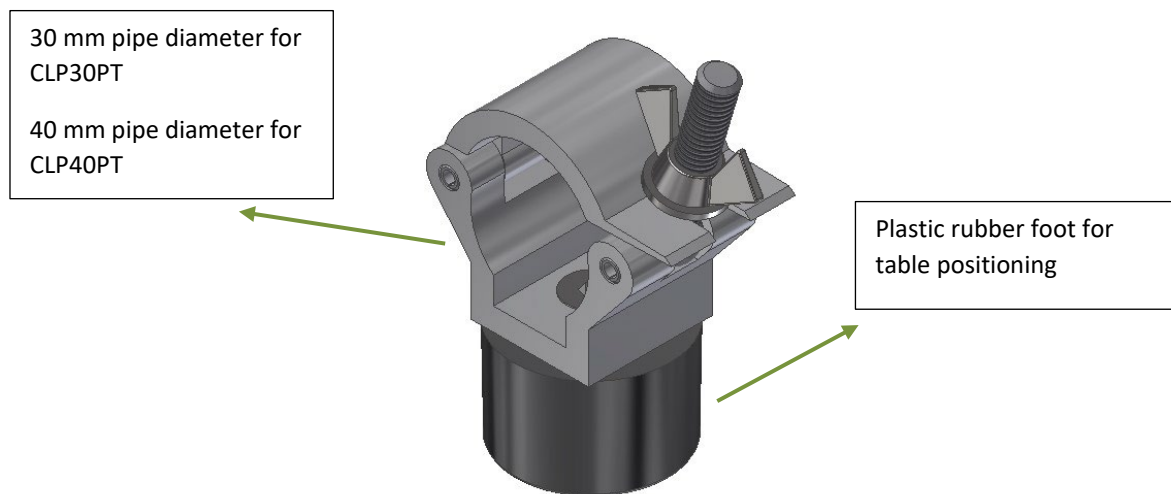


Figure 1 Pipe diameter

6.2 Specifications

Parameter	Value
Size [mm]	See drawings
Weight [kg]	0,6 kg / 1,32 lbs
Maximum weight load for a complete set of 4 pcs double clamps	100,0 kg / 220,0 lbs
Operating temperature [°C]	0 - 45
Operating rel. humidity [%rH]	10 - 75
Operation area	Indoor in closed rooms

7. Installing the clamps to the frame



Make sure that only EVO-FRAMES are installed with FRAME-PF-UNI-CLP PT Series!
Do not try to use it with other products because serious accidents can occur!



Make sure to use always all four clamp sets.

The clamps are mounted to the frame and the plastic rubber feet are positioned on a rigid surface (e.g. table). See exemplary image below in Figure 2.



Figure 2 Exemplary image of FRAME-PF-UNI-CL30PT in portrait orientation

Manual FRAME-PF-UNI-CLP PT Series

Step by Step installation procedure

Make sure you mount the clamps on the side of the frame without the knob for adjusting the frame. See Figure 5.

First mount all four smaller clamps (either 30 mm or 40 mm) to the EVO-FRAME. For this untighten the wing nuts and open the clamps. Mount the clamps to the correct position on the frame. Tighten the wing nuts by hand so that they are securely closed. Proceed like that with all four clamps.



Figure 3 Mounting small clamps to the Frame



Position the clamps as close as possible to the outer edges of the frame. This will make the frame as stable as possible. Make sure to connect the clamps only at a position where the pipe is straight and not bended.



Figure 4 Four clamp set mounted to exemplary EVO-FRAME



Over tightening the nuts may deform the trussing / tube to which it is attached and by this damage those parts. Furthermore, the clamp itself can also be damaged by applying to much torque while tightening the nuts.



Before transport and storage close the clamps and hand tighten the nuts.



Figure 5 Frame installed in portrait mode on floor with adjustment knob on top side

14. System maintenance and inspection (Re-examination)



The FRAME-PF-UNI-CLP PT series does not require special maintenance but a visual inspection **must be done prior to every installation** in which the system is involved. The inspection must be done by a qualified person!



Periodic inspections are mandatory. Depending on local laws and regulations owners / users must do periodic inspections of the frame and all components.



Note: The necessary inspection can also be done by the manufacturer.

The following inspections should be made:

- Check for any deformation of the clamp
- Make sure that the nut can be turned easily by hand
- Make sure that the clamp opens and closes smoothly
- The clamp should smoothly fit around the correct pipe
- Check for any missing parts such as splints, nuts, washer etc
- Check that the rubber foot is tightened
- There should be no holes, cracks, abrasion or corrosion on any of the parts

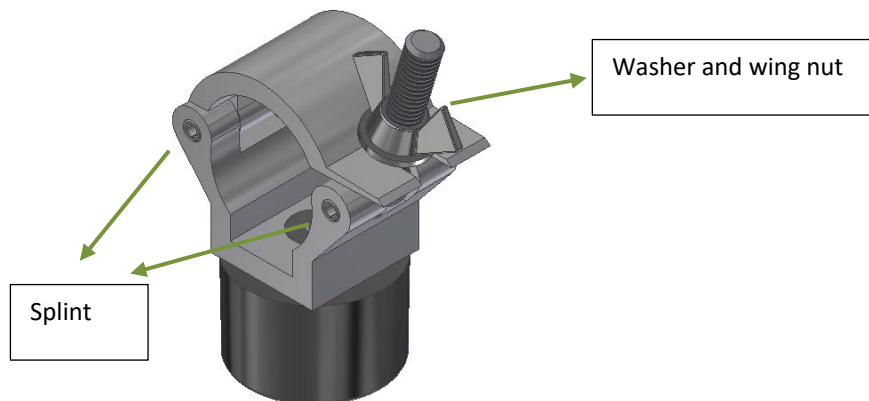


Figure 6 Parts of a clamp set

15. Disposal of components

15.1 Metal parts and packaging

All metal parts and packaging can be recycled.

15.2 Disposal of entire devices

You have the possibility to send old devices back to us. Please note that you have to take over the transportation costs for this. Please send the devices to:

EXACT solutions GmbH

Lustheide 85

51427 Bergisch Gladbach

GERMANY

Imprint

EXACT solutions GmbH

Lustheide 85

51427 Bergisch Gladbach

GERMANY

Tel.: +49 2204 9485 30

E-Mail: info@exactsolutions.de

Web: www.exactsolutions.de