

## ATTENTION!

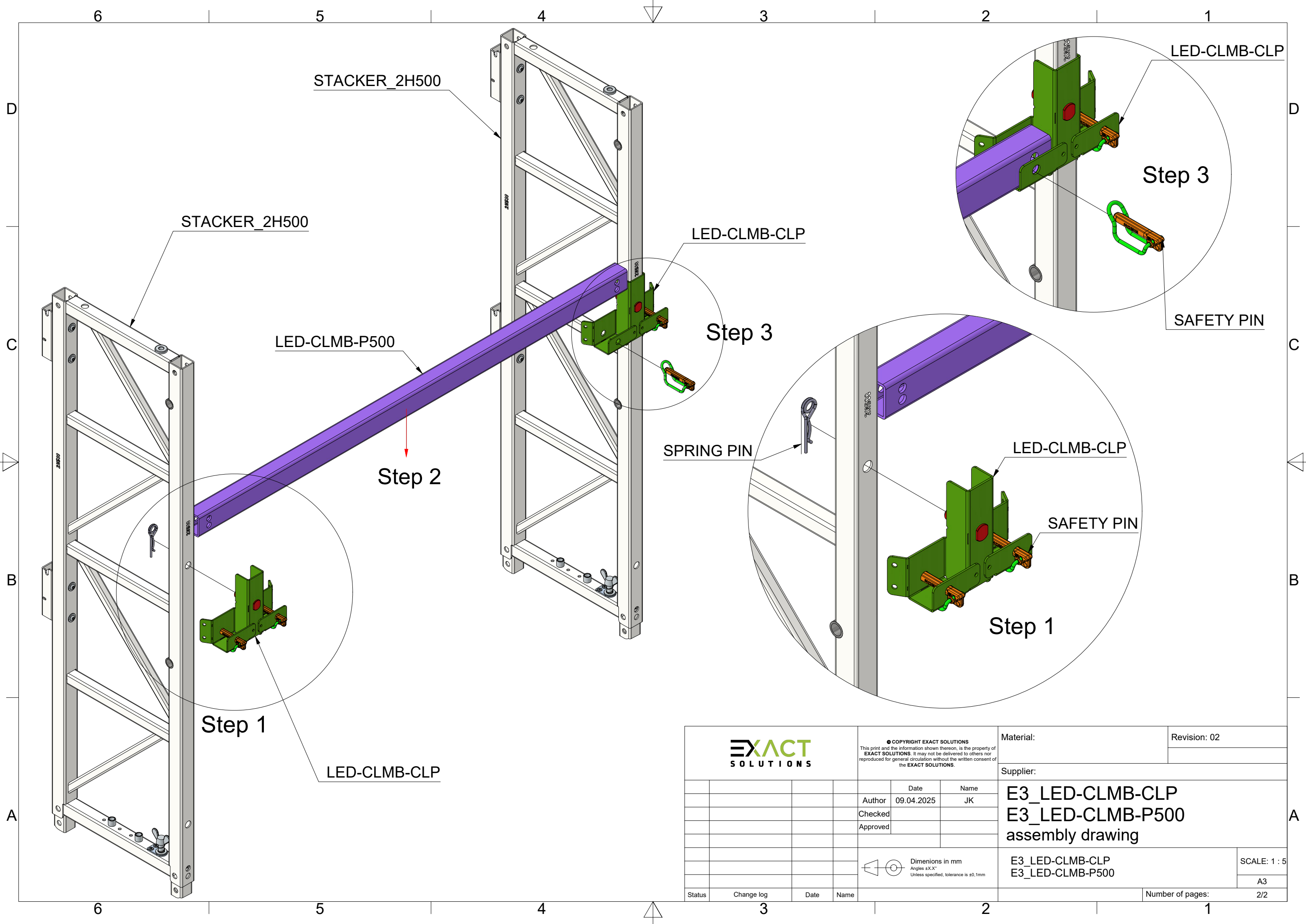
Climbing inside the structure is only allowed without horizontal loads such as wind or impact from persons (see manual).

Only one person (<100 kg including tools) is allowed to climb the system. This person must wear appropriate personal safety equipment to prevent falls.

Only the knots on the bracing tubes of the Stacker may be used as attachment points.  
**See red marking in the drawing.**

Climbing may only start after the ballast has been placed.

<b>EXACT SOLUTIONS</b>				© COPYRIGHT EXACT SOLUTIONS This print and the information shown thereon, is the property of EXACT SOLUTIONS. It may not be delivered to others nor reproduced for general circulation without the written consent of the EXACT SOLUTIONS.		Material:	Revision: 02
				Author	Date	Supplier: <b>E3_LED-CLMB-CLP</b> <b>E3_LED-CLMB-P500</b> assembly drawing	
				Checked	09.04.2025		
				Approved			
				Dimensions in mm Angles ±X.X° Unless specified, tolerance is ±0,1mm		E3_LED-CLMB-CLP E3_LED-CLMB-P500	SCALE: 1 : 8
Status	Change log	Date	Name			Number of pages: 1/2	



<div><div>EXACT</div><div>SOLUTIONS</div></div>	<div>© COPYRIGHT EXACT SOLUTIONS</div> <div>This print and the information shown thereon, is the property of EXACT SOLUTIONS. It may not be delivered to others nor reproduced for general circulation without the written consent of the EXACT SOLUTIONS.</div>	Material:		Revision: 02	
				Supplier:	
			Date	Name	E3_LED-CLMB-CLP E3_LED-CLMB-P500 assembly drawing
			Author	09.04.2025 JK	
			Checked		
			Approved		E3_LED-CLMB-CLP E3_LED-CLMB-P500
			<div><div></div><div>Dimensions in mm</div><div>Angles ±X.X°</div><div>Unless specified, tolerance is ±0,1mm</div></div>		SCALE: 1 : 5
					A3
Status	Change log	Date	Name	Number of pages: 2/2	