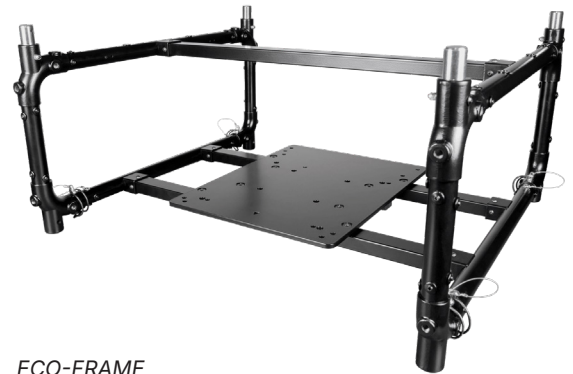


ECO Series

Datasheet

Key-Facts:

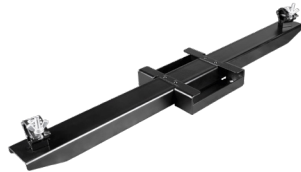
- ▶ Series of professional projector mounting solutions
- ▶ For mid to small sized projectors
- ▶ With or without projector frame
- ▶ Covers almost every installation possibility
- ▶ Designed and made in Germany
- ▶ Robust, reliable and easy to use



ECO-FRAME



ECO-PLATE



ECO-ABD



ECO-ABP

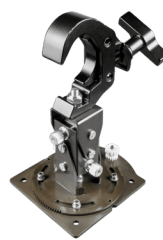


ECO-CLP2550SET

The ECO Series has the target to cover almost every mounting situation for projectors. This can be done by using ECO-FRAME or just an ECO-PLATE. The FRAME protects the projector and eases the handling. Furthermore, it provides even more installation possibilities. The PLATE is simpler but provides just like the FRAME the mounting hole pattern for M6 screws of 100×100 mm. The FRAME add-ons ECO-ABP and ECO-ABD offer the possibility to mount the FRAME in Portrait or in Lens-Down position. They also have the same 100×100 M6 pattern. To directly rigg the frame the series includes the ECO-CLP2550SET which is made of a double clamp of 25 mm clamp connecting to the frame and 50 mm clamp connecting to trussing.



ECO-CLP50



ECO-PAULINE-CLP50



ECO-LINK-CLP50



ECO-CB



ECO-PAULINE-CB



ECO-LINK-CB

ECO Series

Datasheet

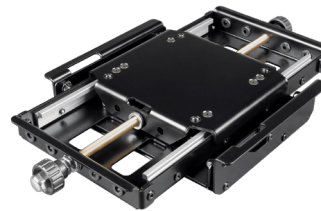
For easy but functional mounting to a ceiling or a pipe/trussing one can choose between the ECO-CLP50 (clamp for 50mm trussing) or ECO-CB (ceiling bracket).

A plus of easy adjustment is provided when using the ECO-LINK, thanks to its lockable ball joint.

For even more adjustment and fine tuning around three axes, the ECO-PAULINE is a good option. Both LINK and PAULINE are available as CB or CLP50.



ECO-SHIFT



ECO-SHIFT + ECO-QH-M

Sometimes, there is a need for more. More fine tuning, more adjustment, more possibilities. The ECO-SHIFT is the perfect accessories to complete the ECO Series. It can be used between FRAME or PLATE and the mounting brackets.

ECO-SHIFT comes in handy whenever there is a need of moving the projector backwards or forwards on a linear axis, generally when a fix lens is used or when the projector should be placed in the center of gravity.



ECO-QH-S



ECO-QH-M

To round up the series and to ease installation, users can add the Quick Hang option to the brackets. That's either ECO-QH-S or ECO-QH-M depending on the bracket. In the future ECO Series will also include a variation of length adjustable poles.

ECO Series

Datasheet

ECO SERIES: WEIGHTS

	Weight [kg]
ECO-FRAME	6.0
ECO-PLATE	2.1
ECO-ABP	1.4
ECO-ABD	2.8
ECO-CLP2550	1
ECO-CLP50	1.3
ECO-CB + QH-S	3.2
ECO-LINK-CLP50	3.0
ECO-LINK-CB	3
ECO-PAULINE-CLP50	2.1
ECO-PAULINE-CB	2.1
ECO-SHIFT	1.8
ECO-QH-S	0.9
ECO-QH-M	1.8

ECO SERIES COMBINATIONS: LOAD LIMITS MATRIX

The ECO Frame and the ECO Plate have a load limit of 34 kg (74.96 lbs). Considering a weight of 6kg for the ECO Frame, it results in a weight of 40 kg.

	ECO-FRAME	ECO-FRAME LANDSCAPE DOUBLE STACK	ECO-PLATE
ECO-LINK	40 kg (88.18 lbs)	80 kg (176.37 lbs)	40 kg (88.18 lbs)
ECO-PAULINE	40 kg (88.18 lbs)	40 kg (88.18 lbs)	40 kg (88.18 lbs)
ECO-SHIFT	40 kg (88.18 lbs)	40 kg (88.18 lbs)	40 kg (88.18 lbs)
ECO-CB + ECO-QH-S	40 kg (88.18 lbs)	40 kg (88.18 lbs)	40 kg (88.18 lbs)
ECO-CLP50	40 kg (88.18 lbs)	80 kg (176.37 lbs)	40 kg (88.18 lbs)
ECO-CLP2550SET	40 kg (88.18 lbs)	80 kg (176.37 lbs)	
ECO-ABD	40 kg (88.18 lbs)		
ECO-ABP	40 kg (88.18 lbs)		
ECO-QH-S	40 kg (88.18 lbs)	40 kg (88.18 lbs)	40 kg (88.18 lbs)
ECO-QH-M	40 kg (88.18 lbs)	40 kg (88.18 lbs)	40 kg (88.18 lbs)

ECO Series

Datasheet

